



LED Lighting

Computer Simulation

**40 W**  
**80 W**

## **KOSMOS** the force and the fascination

The power of LED's light  
The great saving of the consumption  
The elegance of the style

COLOR  
WHITE



**IP 66**



## Housing

Die-cast aluminium, weather resistant.

## Protection factor

IP 66

## Power

48W, 96W

## Lamp

40, 80 LED's 1.2 W high luminous flux.

Luminous flux:

White 4.320 lm, 8.640 lm

Rated lifetime :100.000 h

Beam opening: 120°

## Colour LED available

Monochromatic unit in the following colours:

White.

White colour temperature available from 3.500° to 8.000° K upon request.

## Power Supply

Electronic integrated.

## Power Requirements

90÷260 V AC, 50/60 Hz.

## Power Consumption

50, 100 W.

## Insulation class

I

## Patents

EP1601910: Led light projector

## Regulatory Listings

CE

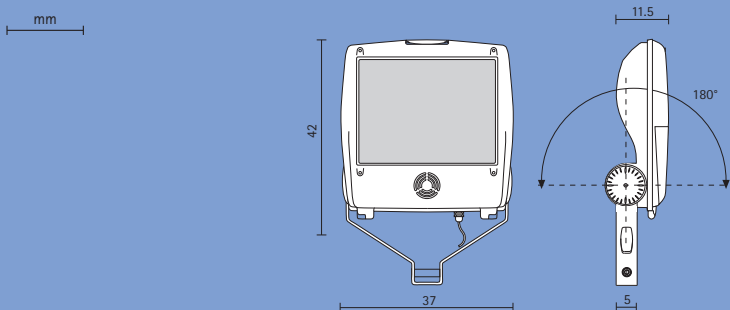
## Operating Temperature

-60°C ÷ +55°C

-76°F ÷ +131°F

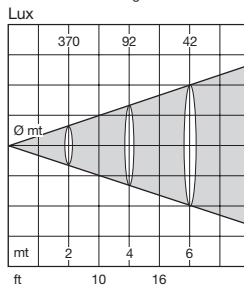
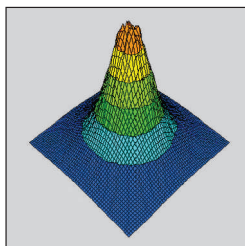
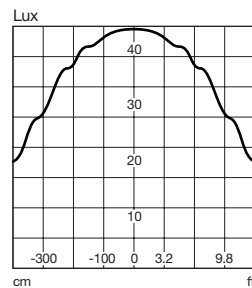
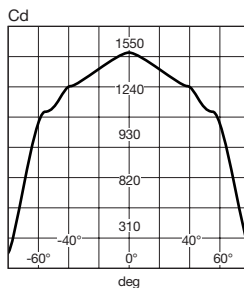
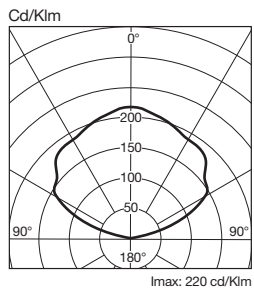
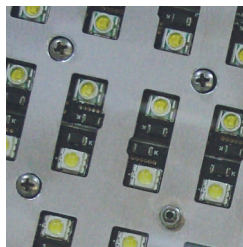
## Weight

10 Kg /22.05Lbs



## Opening beam 120°

It allows the maximum beam opening smoothing the light diffusion.



distance	Lux	Ø 50%	Ø 10%
3 mt	164	4 mt	9.5 mt
4 mt	92	5.3 mt	12.5 mt
5 mt	60	6.5 mt	16 mt
6 mt	42	8 mt	18.5 mt
7 mt	30	9.5 mt	23 mt
8 mt	24	10.8 mt	26 mt
10 mt	14	14 mt	31 mt